



The Multivan 6.1





The icon, updated.

The Multivan

6.1



Kombi van - the original.

The Multivan 6.1 continues the strength of its predecessors and sets new standards in its class. State-of-the-art technologies and uncompromising multifunctionality make the Multivan 6.1 a versatile vehicle for those whose lives are always on the move.

Refined design.

Completely renewed front, modified colour range as well as LED headlights¹ and LED tail lights¹ with a striking signature.

Proven quality.

Highly stable vehicle body, durable materials and high-quality workmanship.

Impressive range of variants.

Three equipment lines, several engine/gearbox combinations and a wide selection of optional equipment.

State-of-the-art driver assistance systems*.

Front Assist with City Emergency Braking and Adaptive Cruise Control, Driver Alert, Blind spot Monitoring (Side Assist) with Rear Traffic Alert and Crosswind Assist fitted as standard.

1. Optional equipment for Comfortline Premium models.

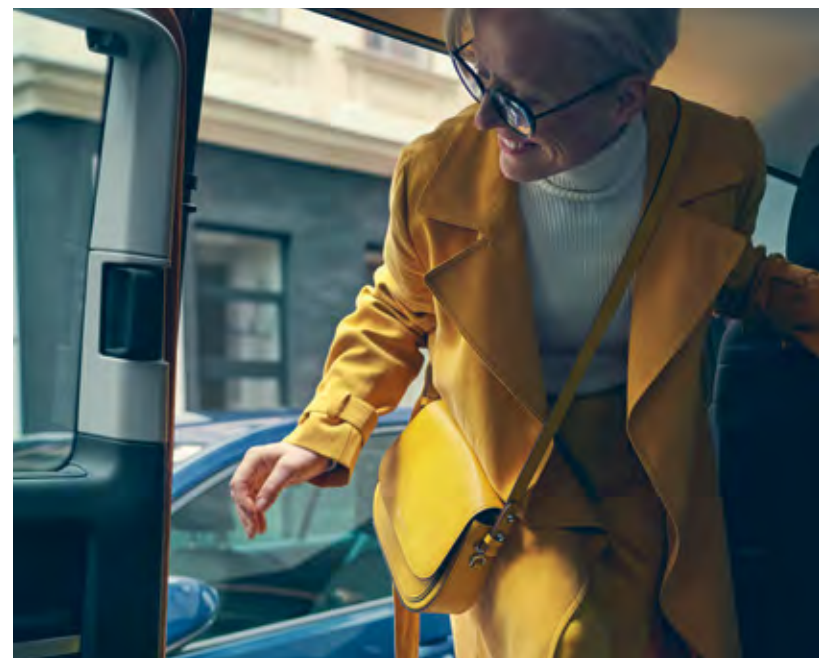
* Safety technologies are designed to assist the driver, but should not be used as a substitute for safe driving practices.



Multivan 6.1,
endless fun.



More flexible. More variable. More carefully considered. The Multivan 6.1 can do almost anything.



Slide. Fold. Turn. There are a great deal of good ideas in the Multivan 6.1.

A photograph of a car's interior, focusing on the front seats. The seats are upholstered in dark leather with visible stitching. The dashboard and center console are also visible, featuring a modern design with a digital display. The lighting is soft, highlighting the texture of the leather and the sleek lines of the interior components.

High driving Comfort.

Ergonomic seats with dimensionally stable premium padding, excellent noise insulation, superb all-round visibility and a pleasant feeling of space.

Best integration.

High-resolution colour Digital Cockpit¹, new radio and navigation systems with either 8" or 9.2" touchscreen, and wireless App-Connect² will keep you constantly connected.

Vehicle interior with maximum variability.

Swivel seats and 3-seater bench seat in the passenger compartment can be easily folded, effortlessly rolled and securely fixed at any point of the rail system. Easy handling during seat removal and installation.

Upgrade of standard equipment.

Leather-covered multifunction steering wheel, a redesigned dash panel, electric child safety lock and LED interior lighting now all fitted as standard.

Image shows Nappa Leather interior trim. Optional on Comfortline Premium and Comfortline Exec models.

1. Optional for Comfortline Premium models, standard for Comfortline Exec and Highline models.

2. App-Connect is compatible for selected apps with the latest smartphone versions of iOS and Android, active data service, optional connection cable (sold separately).



Standard equipment Comfortline Premium.



Design

17-inch 'Devonport' alloy wheels
 H7 halogen headlights
 Radiator grille with two chrome trim strips
 Body colour bumpers, exterior mirror housing and door handles
 Heated electric folding exterior mirrors
 Chrome-coloured "Multivan" badge next to the side turn signals

Variant

Short wheelbase / Long wheelbase
 2.0L TDI340 110kW engine
 7-speed DSG transmission
 Front-wheel drive / 4MOTION All-Wheel Drive

Cockpit

Dash panel with black painted trim, chrome applications, stowage compartments and lockable glove box
 Leather-covered multifunction steering wheel, height and longitudinal adjustment
 "Plus" multifunction display
 Additional 12 V socket on the dash panel
 Height-adjustable comfort seats with manually adjustable lumbar supports and armrests
 LED interior lighting with two reading lights in the roof console
 "Circuit" cloth seat upholstery in Titanium Black
 Carpeted floor
 Grab handles for driver and front passenger
 Sun visors with vanity mirrors

Infotainment and connectivity

Discovery Media 8" navigation system with colour touch display USB/AUX/SD input, Bluetooth and six loudspeakers
 2 USB-C ports, wireless App-Connect-

Passenger compartment

Seven (7) seater
 Electric power sliding doors, left and right with sliding windows
 2 swivel seats with armrests, sliding, removable, in 2nd row
 3-seater bench with seat, reclining, sliding, removable, in 3rd row
 ISOFIX and top tether child seat mounting points for seats in 2nd and 3rd row
 Rear seat rail system, allowing longitudinal adjustment
 Carpeted floor
 Steps with illuminated "COMFORTLINE" lettering
 LED interior lighting

Luggage compartment

Lifting tailgate with rear heated window and wiper
 Power latching tailgate
 Luggage compartment cover
 Six fastening rings for luggage securing
 Two LED luggage compartment lights

Air conditioning and sun protection

"Climatronic" 3-zone air conditioning system
 Sun blinds in passenger compartment
 Heat-insulating windows

Driver assistance and safety systems

Electromechanical steering
 Driver Fatigue Detection*
 Cross Wind Assist*
 Electronic Stability Programme with brake assist system, ABS, traction control system, electronic differential lock and Hill Start Assist*
 Daytime running lights
 Automatic headlights with rain-sensing wipers
 Adaptive Cruise Control (ACC) including Front Assist with City Emergency Brake (CEB)*
 Blind spot Monitoring (Side Assist) with Rear Traffic Alert*
 Lane Assist (Lane keep)*
 Multi Collision Braking System (MCB)
 Front & rear Parking Sensors*
 Rear View Camera*
 Electric childproof lock for sliding doors, lockable from the front cabin

* Safety technologies are designed to assist the driver, but should not be used as a substitute for safe driving practices.

- App-Connect is compatible for selected apps with the latest smartphone versions of iOS and Android, active data service, optional connection cable (sold separately).

Standard equipment Comfortline Exec.



Design

18-inch 'Springfield' alloy wheels
 LED headlights and LED tail lights
 Fog lights with integrated static cornering light function
 Radiator grille with five chrome trims
 Body colour bumpers, exterior mirror housing and door handles
 Heated electric folding exterior mirrors
 B pillar in high-gloss black
 Chrome-coloured "Multivan" badge next to the side turn signals

Variant

Long wheelbase
 2.0L TDI450 146kW engine
 7-speed DSG transmission
 Front-wheel drive

Cockpit

Dash panel with black painted trim, chrome applications, stowage compartments and lockable glove box
 Leather-covered multifunction steering wheel, height and longitudinal adjustment
 Digital Cockpit display
 Additional 12 V socket on the dash panel
 Height-adjustable comfort seats with manually adjustable lumbar supports and armrests
 LED interior lighting with two reading lights in the roof console
 "ArtVelours" microfleece seat upholstery, two-tone in Palladium/Titanium Black
 Carpeted floor
 Grab handles for driver and front passenger
 Sun visors with vanity mirrors

Infotainment and connectivity

Discovery Pro 9.2" navigation system with colour touch display USB/AUX/SD input, Bluetooth and six loudspeakers
 2 USB-C ports, wireless App-Connect~

Passenger compartment

Seven (7) seater
 Electric power sliding doors, left and right with sliding windows
 2 swivel seats with armrests, sliding, removable, in 2nd row
 3-seater bench with seat, reclining, sliding, removable, in 3rd row
 Multi-function table
 ISOFIX and top tether child seat mounting points for seats in 2nd and 3rd row
 Rear seat rail system, allowing longitudinal adjustment
 Carpeted floor
 Steps with illuminated 'COMFORTLINE" lettering
 LED interior lighting

Luggage compartment

Electric opening/closing tailgate with rear heated window and wiper
 Luggage compartment cover
 Six fastening rings for luggage securing
 Two LED luggage compartment lights

Air conditioning and sun protection

"Climatronic" 3-zone air conditioning system
 Sun blinds in passenger compartment
 Privacy glass in the passenger compartment

Driver assistance and safety systems

Electromechanical steering
 Driver Fatigue Detection*
 Cross Wind Assist*
 Electronic Stability Programme with brake assist system, ABS, traction control system, electronic differential lock and Hill Start Assist*
 Dynamic running gear (body lowered by approx. 20 mm)
 Daytime running lights
 Automatic headlights with rain-sensing wipers
 High beam Assist (Light Assist)*
 Adaptive Cruise Control (ACC) including Front Assist with City Emergency Brake (CEB)*
 Blind spot Monitoring (Side Assist) with Rear Traffic Alert*
 Lane Assist (Lane keep)*
 Park Assist with Front and Rear Parking Sensors and Side Protection*
 Multi Collision Braking System (MCB)
 Rear View Camera*
 Electric childproof lock for sliding doors, lockable from the front cabin

* Safety technologies are designed to assist the driver, but should not be used as a substitute for safe driving practices.

~ App-Connect is compatible for selected apps with the latest smartphone versions of iOS and Android, active data service, optional connection cable (sold separately).

Standard equipment Highline.



Design

18-inch 'Springfield' alloy wheels
 LED headlights and LED tail lights
 Fog lights with integrated static cornering light function
 Radiator grille with five chrome trims
 Body colour bumpers, exterior mirror housing and door handles
 Heated electric folding exterior mirrors
 B pillar in high-gloss black
 Chrome-coloured "Multivan" badge next to the side turn signals

Variant

Short wheelbase
 2.0L TDI450 146kW engine
 7-speed DSG transmission
 Front-wheel drive / 4MOTION all-wheel drive

Cockpit

Dash panel with black painted trim, chrome applications, stowage compartments and lockable glove box
 Leather-covered multifunction steering wheel, height and longitudinal adjustment
 Digital Cockpit display
 Additional 12 V socket on the dash panel
 Height-adjustable comfort seats with manually adjustable lumbar supports and armrests
 LED interior lighting with two reading lights in the roof console
 "Nappa" leather# seat upholstery, in Titanium Black
 Carpeted floor
 Grab handles for driver and front passenger
 Sun visors with vanity mirrors

Infotainment and connectivity

Discovery Pro 9.2" navigation system with colour touch display USB/AUX/SD input, Bluetooth and six loudspeakers
 2 USB-C ports, wireless App-Connect-

Passenger compartment

Seven (7) seater
 Electric power sliding doors, left and right with sliding windows
 2 swivel seats with armrests, sliding, removable, in 2nd row
 3-seater bench seat with centre armrest, reclining, sliding, removable, in 3rd row
 Multi-function table
 ISOFIX and top tether child seat mounting points for seats in 2nd and 3rd row
 Rear seat rail system, allowing longitudinal adjustment
 Carpeted floor
 Steps with illuminated "HIGHLINE" lettering
 LED interior lighting

Luggage compartment

Electric opening/closing tailgate with rear heated window and wiper
 Luggage compartment cover
 Six fastening rings for luggage securing
 Two LED luggage compartment lights

Air conditioning and sun protection

"Climatronic" 3-zone air conditioning system
 Sun blinds in passenger compartment
 Privacy glass in the passenger compartment

Driver assistance and safety systems

Electromechanical steering
 Driver Fatigue Detection*
 Cross Wind Assist*
 Electronic Stability Programme with brake assist system, ABS, traction control system, electronic differential lock and Hill Start Assist*
 Dynamic running gear (body lowered by approx. 20 mm)
 Daytime running lights
 Automatic headlights with rain-sensing wipers
 High beam Assist (Light Assist)*
 Adaptive Cruise Control (ACC) including Front Assist with City Emergency Brake (CEB)*
 Blind spot Monitoring (Side Assist) with Rear Traffic Alert*
 Lane Assist (Lane keep)*
 Park Assist with Front and Rear Parking Sensors and Side Protection*
 Multi Collision Braking System (MCB)
 Rear View Camera*
 Electric childproof lock for sliding doors, lockable from the front cabin

* Safety technologies are designed to assist the driver, but should not be used as a substitute for safe driving practices.

- App-Connect is compatible for selected apps with the latest smartphone versions of iOS and Android, active data service, optional connection cable (sold separately).

Leather appointed seats have a combination of genuine and artificial leather, but are not wholly leather.

Equipment Features.

01



02



03



04



06



01 Electric sliding doors. Both sliding doors can be opened and closed electronically, either using the switch in the centre console or using the remote control key. | CP | CE | H |

02 LED head lights. Gives the vehicle an attractive signature with a large headlight and high light volume at the same time. | CP | CE | H |

03 Swivelling seats with integrated child booster seats. The individual seat with armrests can be changed quickly and easily from a full adult seat with a three-point safety belt into a robust child booster seat, and can be swivelled as required, all without you breaking a sweat. | CP | CE | H |

04 Sliding windows. New handles make it even easier to open and close the side windows. | CP | CE | H |

06 "Multivan" badge
The signet in chrome finish sits next to the turn signal repeater. | CP | CE | H |

05



05 Electrically adjustable, heated, folding door mirrors. Automatically folded to the vehicle when the vehicle is locked by means of remote control. | CP | CE | H |

Equipment Features.



01 Multi-function table with stowage areas.
The multi-function table can be used for business papers, notes and laptops, then swivelled and folded away when not in use. | CP | CE | H |

02 Stowage areas under the individual seat.
Hidden away under the two swivel seats are two storage draws. | CP | CE | H |

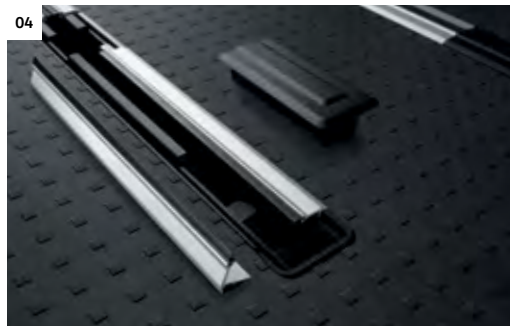
03 Discover Media satellite navigation system.
Discover Media satellite navigation system features an 8 inch colour touch-screen with proximity sensor. The system also includes a 32GB media storage, natural voice control, wireless App-Connect.~ | CP |

04 "Discover Pro" navigation system.
In addition to the functions of the "Discover Media" navigation system, the system offers a 23.4 cm (9.2 inch) colour touch display including proximity sensors, simultaneous display of the navigation map on the Digital Cockpit and on the navigation system screen. | CP | CE | H |

05 "Climatronic" 3-zone air conditioning system.
The fully automatic air conditioning system with allergen filter has various sensors and keeps the set temperature constant for the driver, front passenger and other passengers. In the passenger compartment, a second heater, an additional evaporator and several vents in the recirculating air canopy ensure a pleasant climate. | CP | CE | H |

06 Programmable Auxiliary heater.
Working independently of the vehicles heating and ventilation system the Auxiliary heater can be programmed via the central control unit and keeps the interior pleasantly warm. | CP | CE | H |

Equipment Features.



01 Good Night Package. Stay overnight in the Multivan with the Good Night Package. The package is made up of a multiflex board extension for the luggage compartment, fabric blinds for the windows, a mini reading lamp, a washable bed cover, and three drawers underneath the 3-seater bench seat. Short wheelbase models only. Multiflex board replaces retractable luggage compartment cover. | CP | H |

02 Loading sill protection. Protects the painted rear bumper from scratches when loading and unloading the luggage compartment. The plastic trim is available in Silver or Black. | CP | CE | H |

03 Insulating box. It is electrically operated, and can be used to cool and warm the contents. The 32L insulating box can hold 1.5L bottles lying down, and 1.0L bottles standing up. | CP | CE | H |

04 Rail system. The unique rail system allows the 3-seater bench seat and the individual seats to be moved easily over the entire length of the passenger compartment. The reason for this is the intelligent mechanism that allows the seats to slide along on hard rubber rollers and snap securely upwards at any point. In order to remove or install the seats, the aluminium covers can be removed in a few simple steps. | CP | CE | H |

05 Multiflex board. This stable board with padding divides the luggage compartment, creates an additional shelf and enlarges the lying surface. Multiflex board replaces retractable luggage compartment cover and is optionally available with Good night package only. | CP | H |

Electric tailgate. It can be opened either via the remote control, the button in the driver door or the tailgate handle and closed by pressing the button in the tailgate trim or by briefly pulling down the tailgate. | CP | CE | H |



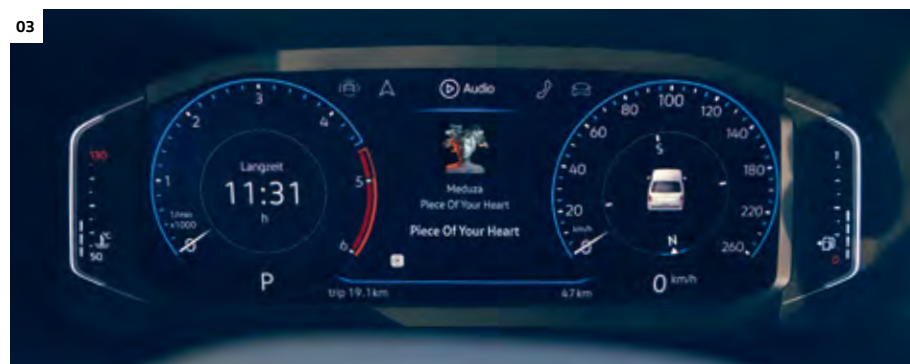
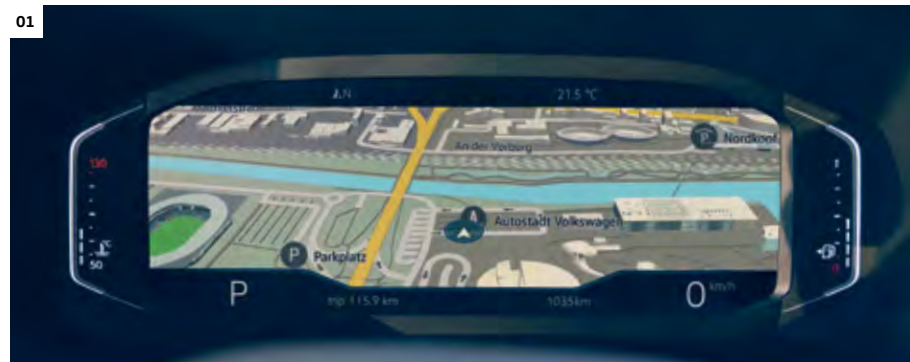
Closely integrated for the future.

Cars are getting smarter. The Multivan is already equipped with many digital technologies that make driving more comfortable. For example, the high-resolution Digital Cockpit¹ with navigation map. And this is just the beginning.

More comfort, **more** connectivity

You can now experience digital progress up close in the Multivan. State-of-the-art infotainment systems with large storage capacity and the Digital Cockpit¹ offer many new functions. The latter immediately impresses with its 26 cm (10.25 inch) display, its intense colours as well as its bright and extremely high-contrast image. The Digital Cockpit¹ is operated via the touch display of the infotainment system and via the leather-covered multifunction steering wheel. Use the buttons to conveniently scroll through the playlist in your smartphone media library, select the next call via contact portraits or set your safe distance with Adaptive Cruise Control (ACC)*.

Even more possibilities arise when the Digital Cockpit¹ is combined with the 23.4 cm (9.2 inch) "Discover Pro" navigation system¹. A large second navigation map can then be positioned on the Digital Cockpit¹. An additional benefit: both maps can be zoomed in at different distances. In that case, the Digital Cockpit¹ for instance only shows the immediate environment, while you have a large overview on the navigation system.



01 Second navigation map in 3D design.

02 Overview of the driving data.

03 Smartphone playlist.

* Safety technologies are designed to assist the driver, but should not be used as a substitute for safe driving practices.
1. Optional on Comfortline Premium models.

A question of drive.

Everyone has their own driving style – and there is a right drive for everyone. Whether sporty, comfortable or efficient: the Multivan's engine/gearbox combinations and running gear adjustments hardly set any limits to your desire for freedom.

2.0L TDI340 (110kW, 340Nm)

Front wheel-drive - Average fuel consumption from 6.6L/100km**

2.0L TDI450 (146kW, 450Nm)

Front wheel-drive - Average fuel consumption from 7.1L/100km**



Dual clutch gearbox DSG.

The standard, adaptive 7-speed dual clutch gearbox, enables a fully automatic, smooth gear changes without interruption of tractive power and adapts to the driver's driving style.

Adaptive chassis control with Driver profile selection.¹

The optional Adaptive chassis control offers multiple driver profiles, including "normal", "comfortable", "eco" and "sporty". The selection is made via a button and can also be made while the vehicle is in motion. In addition, you can also create your own driving profile.

1. Optional for Highline models only. Not available for Comfortline Premium or Comfortline Exec models.

Arrive Safely.

Advanced technology on the road.

Innovative driver assistance and safety systems help you to avoid danger in critical situations, and the new electromechanical steering as standard allows the introduction of additional driver assistance features.



Driver Fatigue Detection*. Uses visual and audible warning signals to recommend that the driver takes a break as soon as it registers driving behaviour that indicates fatigue. | CP | CE | H |



Seatbelt warning. Visual warning when the engine is started and an audible warning is emitted, if the driver's seatbelt is not fastened. | CP | CE | H |



Airbags. Front, side and curtain airbags provide the best possible protection in the event of head-on or side impacts. | CP | CE | H |



Cruise Control with speed limiter. At 30km/h and above, the system maintains the set speed throughout uphill and downhill inclines when activated. | CP | CE | H |



Anti-lock Braking System (ABS). Prevents the wheels from locking and thereby maintains manoeuvrability. | CP | CE | H |



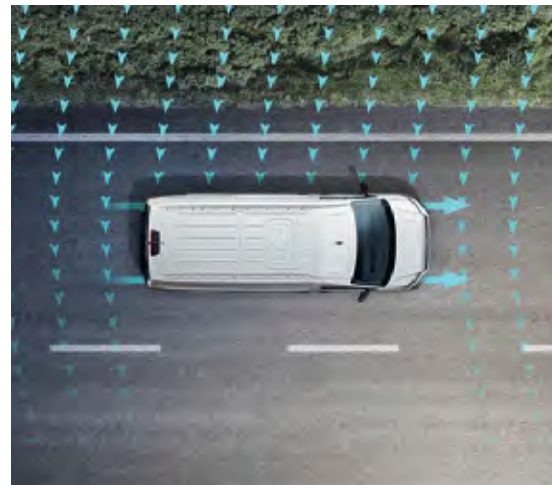
Electronic Stabilisation Program (ESP). Standard feature that prevents under- and over-steering through targeted braking of the individual wheels. | CP | CE | H |



Traction Control Systems (TCS). Prevents wheels from spinning excessively. | CP | CE | H |



Electronic Differential Lock (EDL). Distributes the engine torque to the tyres without slippage. | CP | CE | H |



Crosswind Assist*.

The system is a sub-function of the Electronic Stabilisation Program (ESP) that helps dealing with high crosswinds by automatically activating the brakes if needed. | CP | CE | H |



Sensor-Based Side Protection*.

As part of Park Assist, Side protection monitors the vehicle's sides and alerts you with visual and audible warnings if you're getting too close to other vehicles, pillars, walls or pedestrians. | CP | CE | H |

Lane Keep Assist*.

Countersteers if a lane is left unintentionally while alerting the driver at the same time by using a warning tone and information in the multifunction display. | CP | CE | H |

Front Assist with City Emergency Braking*.

Uses a radar system to detect situations where the distance to the vehicle in front is critical and reduces the vehicle's stopping distance. In dangerous situations, the system alerts the driver using visual and acoustic signals, and with a warning jolt of the brakes. | CP | CE | H |



Adaptive Cruise Control (ACC)*.

Automatically adapts the vehicle's speed to that of the vehicle driving in front and maintains the distance set by the driver. | CP | CE | H |

Multi-Collision Braking.

Triggers braking after a collision, with the aim of preventing secondary crashes, activated when two independent sensors detect an accident. After a short delay, the vehicle begins a phased braking action down to 10 km/h, during which the driver can take over at any time. | CP | CE | H |

Electromechanical power steering.

The speed-dependent steering with active reset improves your driving feeling and safety and achieves steering precision. | CP | CE | H |

Hill Hold Assist.

This prevents the vehicle from rolling back on inclines, making it easier to start off on uphill slopes. | CP | CE | H |

Rear View Camera (RVC)*.

Simplifies parking by showing a limited view of the area behind the vehicle on the display of the audio system. Additional guidelines help the driver manoeuvre into the space. | CP | CE | H |

Front and Rear Park Distance Control (PDC)*.

Emits audible warnings when obstacles are detected in front of or behind the vehicle when parking, and also provides a visual display of the vehicle's distance from these obstacles. | CP | CE | H |

Park Assist*.

Park Assist aids positioning into parking spaces. When reverse is engaged, the vehicle assumes control of the steering. All that's required of the driver is to operate the pedals, whilst keeping a good lookout. | CP | CE | H |

Blind Spot Monitoring with Rear Traffic Alert*.

The Blind Spot Monitor with Rear Traffic Alert system supports the driver in assessing and avoiding dangerous situations, especially in critical situations, e.g. city and heavy traffic. The Blind Spot Monitor detects cars and motorcycles in the driver's blind spot and highlights these vehicles via a LED indicator in the door mirror. Rear Traffic Alert warns the driver of approaching traffic at the rear of the car when reversing via an audible warning followed by a visual message in the Optical Parking System (OPS). | CP | CE | H |

Volkswagen Accessories

Volkswagen Genuine Accessories ensures your Volkswagen remains 100% Volkswagen. The extensive range of Multivan Accessories provides you with the opportunity to adapt your vehicle even more precisely to your individual needs. From transport, exterior and interior solutions to alloy wheels that perfectly complement your Volkswagen.



01 Universal Traffic Recorder

For added protection the Multivan/California can be fitted with the Volkswagen Universal Traffic Recorder, a front camera that allows you to record any incidents onto a removable SD card. You have total control over all camera settings via the UTR Volkswagen App, which also includes a car finder feature. And the best thing is, the device requires no battery or recharging.



02 Bicycle tailgate carrier. With the ability to carry up to four adult sized bikes (max payload of 60kg), this genuine bicycle carrier is the perfect accessory for when travelling with friends or family. Designed to work around you, the carrier does not prohibit the opening of the tailgate, and allows the vehicle to be used as normal when the bikes are removed from the rack.

03 Tow bar kit. The Volkswagen Multivan towbar is designed for perfect integration with your vehicle chassis and tested to meet the stringent Australian and Volkswagen engineering standards. The genuine electrical installation kit provides the electrical supply, and ensures that the trailer can be operated safely. Full integration into the vehicle's CAN-bus network is provided for all components, including support for the vehicle-trailer stabilisation system.



04 Luggage compartment tray range. Keep the load compartment clean and protect it from scratches and dirt with the Multivan luggage compartment tray range.

05 Roof bars with roof box. The genuine roof bars provide the base for all roof attachments with an aerodynamic design to suit the Multivan. For that sneaky weekend away or weekend helping a mate move, Volkswagen genuine roof bars and box will help carry the load. Roof bar load capacity: 94kg (set of two).

06 Rubber floor mat set. The Volkswagen rubber mats protect your vehicle interior from dirt and moisture. They are designed to fit perfectly, are easy to clean and have a non-slip underside. For the front only.

Solid paint finishes



Candy White



Cherry Red



Pure Grey

Metallic and Pearlescent paint finishes



Reflex Silver



Ravenna Blue



Fortana Red



Indium Grey



Mojave Beige

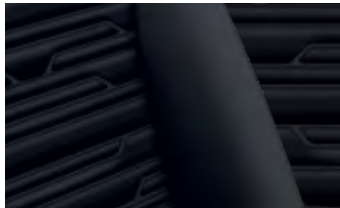


Starlight Blue



Deep Black

Seat upholstery



Circuit
Cloth seat upholstery Titanium Black
Standard on Comfortline Premium



ArtVelours
Microfleece in Palladium/Titanium Black
Standard on Comfortline Exec
Optional on Comfortline Premium



Nappa
Leather* in Titanium Black
Standard on Highline
Optional on Comfortline Premium and Exec

Wheels



**17" alloy wheel
- DEVONPORT**

Standard on Comfortline Premium models



**18" alloy wheel
- SPRINGFIELD**

Standard on Comfortline Exec and Highline models

* Leather appointed seats have a combination of genuine and artificial leather, but are not wholly leather. Please note that Metallic and Pearl Effect paint are optional at extra cost. The print process does not allow for exact reproduction of the exterior or the upholstery colours. Please contact your Volkswagen Dealer for further information on colours and upholstery combinations.

Specifications

Engine	2.0 litre TDI340		2.0 litre TDI450	
Type	4 cylinder inline turbocharged direct injection diesel		4 cylinder inline bi-turbo direct injection diesel	
Max power, kW @ rpm	110 @ 3,500		146 @ 4,000	
Max torque, Nm @ rpm	340 @ 1,750-2,500		450 @ 1,500-2,000	
Cubic capacity, litres/cc	1,968		1,968	
Fuel type (recommended)	Diesel DIN EN 590		Diesel DIN EN 590	
Fuel tank capacity, L	80		80	
Transmission	7 Speed Direct Shift Gearbox (DSG)		7 Speed Direct Shift Gearbox (DSG)	
Driven wheels	Front-wheel drive	4MOTION all-wheel drive	Front-wheel drive	4MOTION all-wheel drive
BlueMotion Start/Stop system [^]	●	●	●	●
AdBlue	●	●	●	●
Fuel Consumption ** - Comfortline Premium				
Combined, L/100km	6.6	7.6		
Fuel Consumption ** - Comfortline Exec / Highline				
Combined, L/100km			7 7.1	7.9

Weights and Capacities

	Comfortline Premium SWB	Comfortline Premium SWB	Comfortline Premium LWB	Comfortline Premium LWB	Comfortline Exec LWB	Highline SWB	Highline SWB
Weights	TDI340 Front-wheel drive	TDI340 4MOTION all-wheel drive	TDI340 Front-wheel drive	TDI340 4MOTION all-wheel drive	TDI450 Front-wheel drive	TDI450 Front-wheel drive	TDI450 4MOTION all-wheel drive
Gross Vehicle Weight (GVM), kg	3,080	3,080	3,080	3,080	3,080	3,080	3,080
Unladen Mass ¹ for Standard roof, kg - DSG	2,266	2,376	2,307	2,422	2,332	2,294	2,404
Payload ² maximum for Standard roof, kg - DSG	814	704	773	658	748	786	676
Towing Capacity, kg [≠]							
Braked	2,500	2,500	2,500	2,500	2,500	2,500	2,500
Unbraked	750	750	750	750	750	750	750
Towbar Load Limit, kg	100	100	100	100	100	100	100

Full vehicle specifications are available at www.volkswagen.com.au

[^]The Start/Stop system is designed to reduce fuel consumption and CO2 emissions. It achieves this by automatically switching off the engine while the vehicle is stationary and then starting it again automatically when the driver wants to drive off. There are certain operating conditions where the Start/Stop system is deactivated (e.g. during engine warm-up), please refer to the owner's manual for full operating information.

**Fuel consumption figures according to ADR 81/02 derived from laboratory testing. Factors including but not limited to driving style, road and traffic conditions, environmental influences, vehicle condition and accessories fitted, will in practice in the real world lead to figures which generally differ from those advertised. Advertised figures are meant for comparison amongst vehicles only.

1. The Unladen Mass (UM) includes 10L of fuel, vehicle fluids and no occupants. Figures quoted are for base model vehicles only.

2. Payload figures determined by subtracting 'Unladen Weight' from total 'Gross Vehicle Mass' (GVM). A vehicle's final payload, given the different configurations, can only be determined by weighing the individual vehicle and comparing to the known GVM. Figures quoted are for base model vehicles only.

≠When fitted with Volkswagen Genuine Tow Bar. Towing capacities are applicable to Volkswagen Genuine Accessory Tow Bar. Towing capacity figures are maximum figures and actual towing capacity depends on factors including the laden mass of the vehicle, driving conditions and fitment of any accessories. Volkswagen Group Australia does not endorse or will not be held liable for any claim, loss or damage arising from the use or fitment of electronic trailer brakes.

Dimensions

■ Short wheelbase

■ Long wheelbase

Dimensions in mm



Features and Specifications

Safety and security	Comfortline Premium (Short Wheelbase)	Comfortline Premium (Long Wheelbase)	Highline (Short Wheelbase)	Comfortline Exec (Long Wheelbase)
Airbags				
Front airbag for driver and front passenger	●	●	●	●
Side/head airbags for driver and front passenger	●	●	●	●
Curtain airbags for outer seats in 2nd and 3rd rows	●	—	●	—
Seat belts				
3-point seat belts with height adjustment and belt tensioners for driver and front passenger	●	●	●	●
3-point seat belts for all rear seats	●	●	●	●
Seat belt warning light and buzzer for driver and front passenger seat	●	●	●	●
Child Restraints				
Child seat top tether anchorage points (for 2nd row Captain's chairs and all seats in 3rd row)	●	●	●	●
ISOFIX child seat anchorage points (for 2nd row Captain's chairs and outer seats in 3rd row)	●	●	●	●
Brakes and Traction Control				
Multi-Collision Brake (MCB)	●	●	●	●
Automatic flashing brake lights activated in emergency braking situation	●	●	●	●
Electronic Stabilisation Programme (ESP)	●	●	●	●
Anti-lock Braking System (ABS)	●	●	●	●
Brake Assist System (BA)	●	●	●	●
Traction Control System (TCS)	●	●	●	●
Electronic Differential Lock (EDL)	●	●	●	●
Hill Hold Control	●	●	●	●
Mechanical rear differential lock (4MOTION only)	○	○	○	—
Hill Descent Control (4MOTION only)	○	○	○	—
Driver Assistance Technology*				
Driver Alert (Fatigue Detection System)	●	●	●	●
Front and rear park distance control with rear view camera system	●	●	●	●
Forward Collision Warning "Front Assist" with City Emergency Braking (City EB)	●	●	●	●
Crosswind Assist	●	●	●	●
Blindspot Monitoring with Rear Traffic Alert	●	●	●	●
Lane Keep Assist	●	●	●	●
Park Assist with Sensor-Based Side Protection	○	○	●	●
Tyre pressure monitoring system	●	●	●	●

● Standard ○ Optional Extra — Not available

*Safety technologies are designed to assist the driver, but should not be used as a substitute for safe driving practices.

Safety and security	Comfortline Premium	Comfortline Premium	Highline	Comfortline Exec
Lighting				
H7 halogen headlights	●	●	—	—
Daytime running lights (DRL)	●	●	—	—
LED headlamps with separate LED daytime running lights and LED tail lights	○	○	●	●
Front fog lights with static cornering function	○	○	●	●
High-beam control (Light Assist)	○	○	●	●
Automatic headlight activation with separate daytime running lights, "Leaving Home" and manual "Coming Home" function	●	●	●	●
High stop light	●	●	●	●
Rear fog light	●	●	●	●
Locking				
Engine immobiliser (electronic)	●	●	●	●
Central locking system with radio remote control and interior release mechanism	●	●	●	●
SAFELOCK deadlock function	○	○	●	●
Anti-theft alarm with interior monitoring, backup horn, and towing protection	○	○	●	●
Two (2) remote control folding keys	●	●	●	●
Electric childproof lock for sliding doors, lockable from the front cabin/remote	●	●	●	●
Automatic locking after take-off (programmable)	●	●	●	●
Head Restraints				
Front safety head restraints, height adjustable	●	●	●	●
Rear head restraints, height adjustable for all seating positions	●	●	●	●

Exterior Equipment / Styling

Doors				
Electric sliding side doors	●	●	●	●
Power latching tailgate with window and wiper/washer	●	●	—	—
Electric opening and closing rear tailgate with window and wiper/washer	○	○	●	●
Windows				
Heat-insulating windshield made of laminated glass	●	●	●	●
Heat-insulating glass (green)	●	●	—	—
Rear privacy glass	○	○	●	●
Side windows (opening) in sliding doors	●	●	●	●
Side windows (fixed) in rear of passenger compartment	●	●	●	●
Windscreen wiper intermittent control and rain sensor	●	●	●	●
Heated rear window with wiper/washer system	●	●	●	●
Power windows with comfort operation and circuit breaker (front)	●	●	●	●

● Standard ○ Optional Extra — Not available

Exterior Equipment / Styling	Comfortline Premium	Comfortline Premium	Highline	Comfortline Exec
Body Enhancements				
Body coloured bumpers	●	●	●	●
Body coloured door handles and sliding door covers	●	●	●	●
Body coloured exterior mirror housings	●	●	—	●
Body coloured exterior mirror housings with high-gloss black base	—	—	●	—
Radiator grille with five chrome trims	●	●	●	●
Chrome on vehicle side, tailgate, lower air intake and side turn signals	—	—	●	●
Stainless steel protection strip for tailgate opening	—	—	●	—
Roof rack preparation rails	●	●	●	●
Front and rear mud guards	●	●	●	●
Trailer hitch preparation	●	●	●	●
Wheels and Tyres				
4 x 17" alloy wheels - DEVONPORT - 235/55 R17 103H rf tyres	●	●	—	—
4 x 18" alloy wheels - SPRINGFIELD - 255/45 R18 103H xl tyres - Breakdown Mobility kit with 12-volt compressor and tyre sealant - spare wheel is not permissible ¹	—	—	●	●
Steel spare wheel - full size, OE tyre	● / — LWB 4MOTION	● / — LWB 4MOTION	—	—
Breakdown Mobility kit with 12-volt compressor and tyre sealant - removal of spare wheel	○ / ● LWB 4MOTION	○ / ● LWB 4MOTION	●	●
Tool kit	●	●	●	●
Vehicle jack	●	●	●	●

Body Builder Items

Electrical interface (terminal block under driver's seat)	●	●	●	●
Second Battery	○	○	○	○

● Standard ○ Optional Extra — Not available

1. Spare wheel is not possible for Comfortline Premium LWB 4MOTION or with 18" Springfield alloy wheels. In this instance the vehicle will be fitted with a Breakdown Mobility Kit.

Comfort & Convenience	Comfortline Premium	Comfortline Premium	Highline	Comfortline Exec
Air Conditioning				
Climatronic air conditioning system, with dual front temperature control and rear controls	●	●	●	●
Air recirculation vents in headliner for rear passenger compartment	●	●	●	●
Cruise Control				
Cruise Control system including speed limiter (programmable)	●	●	●	●
Adaptive Cruise Control (ACC)*	●	●	●	●
Luggage Area				
Lashing rings for load restraint	●	●	●	●
Luggage compartment cover (retractable, removable)	●	—	●	—
In-Car Entertainment and Technology				
<u>Discover Media audio and satellite navigation system with Wireless App-Connect-</u> 8" navigation system with colour touch display with proximity sensor two USB (type C) ports, Bluetooth®, FM radio and six loudspeakers. It also features Wireless App-Connect-.	●	●	—	—
<u>Discover Pro audio and satellite navigation system with Wireless App-Connect-</u> 9.2-inch colour touch screen display with proximity sensors, simultaneous display of navigation maps on the Digital Cockpit and on the navigation system screen, two USB (type C) ports, Bluetooth®, FM radio and six loudspeakers for hybrid navigation, a selection of map options, 64GB of media storage.	○	○	●	●
Bluetooth® phone connectivity with contacts display and Bluetooth® audio streaming, operation via touch screen audio unit or Multi-Function Display	●	●	●	●
Audio, telephone, cruise control and Multi-Function Display controls mounted on steering wheel	●	●	●	●
Instrumentation				
Speedometer & tachometer, electronic odometer and trip meter, service interval display, fuel and coolant gauges, low fuel warning light, adjustable illumination	●	●	●	●
Premium Multi-Function Display (MFD Premium) with TFT colour screen - trip time, trip length, average and current speed, average and current fuel consumption, display until empty and ambient temperature, digital clock, vehicle status, audio, telephone and navigation menus	●	●	—	—
<u>Digital Cockpit</u> 10.25 inch high-resolution colour display operated via the touch display of the infotainment system and via the leather-covered multifunction steering wheel can be used to scroll through playlists, view navigation maps or set the safety distance of the Adaptive Cruise Control ACC	○	○	●	●

● Standard ○ Optional Extra — Not available

*Safety technologies are designed to assist the driver, but should not be used as a substitute for safe driving practices.

-App-Connect is compatible for selected apps with the latest smartphone versions of iOS and Android, active data service and optional connection cable (sold separately).

Comfort & Convenience	Comfortline Premium	Comfortline Premium	Highline	Comfortline Exec
Interior Lighting				
LED interior lighting with two reading lights in front roof console	●	●	●	●
Convenience lighting in rear	●	●	●	●
LED Roof lights in passenger compartment	●	●	●	●
Step lighting at doors in cab and sliding doors in passenger compartment	●	●	●	●
Interior Trims				
Decorative inserts, "Bright Brushed Grey"	●	●	—	●
Decorative inserts, "Pewter Wave Grey"	—	—	●	—
"COMFORTLINE" nameplate on front and rear step inserts	●	●	—	●
"HIGHLINE" nameplate on front and rear step inserts	—	—	●	—
Leather-wrapped gearshift knob	●	●	●	●
Sunshades for side windows in passenger compartment	●	●	●	●
Moulded headlining in passenger area	●	●	●	●
Carpet floor covering in cab and passenger compartment	●	●	●	●
Floor mats in cab (cut pile)	●	●	●	●
Chrome accents on air vents	●	●	●	●
Mirrors				
Exterior mirrors (left and right convex)	●	●	●	●
Exterior mirrors, power adjustable, power folding and heated	●	●	●	●
Auto dimming breakaway interior rear view mirror	●	●	●	●
Power Steering				
Electromechanical power steering	●	●	●	●
Seating				
Height adjustment for driver's and front passenger's seat	●	●	—	—
Lumbar support (manually adjustable) for both front seats	●	●	—	—
Front seats with 12-way power adjustment (slide, seat cushion angle, seat height, recline and 4-way lumbar functions), driver's seat with memory function (3 settings)	—	—	●	●
Front seat heaters, left and right, separately controllable	○	○	●	●
Front seat armrests	●	●	●	●

Comfort & Convenience	Comfortline Premium	Comfortline Premium	Highline	Comfortline Exec
Rear seat rail system, allowing longitudinal adjustment	●	●	●	●
2 x Captain's seats with swivel function and armrests, in 2nd row	●	●	●	●
3-seater bench with reclining seat mechanism and storage compartment, movable, in 3rd row	●	●	●	●
Centre armrest for 3-seater bench seat	—	—	●	●
Child booster seats in 2nd row swivel chairs	○	○	○	○
Cloth seat covering "Circuit"	●	●	—	—
Microfleece seat covering "Art Velour"	○	○	—	●
Savona leather appointed seat upholstery*	○	○	●	○
Two-tone Savona leather appointed seat upholstery*	—	—	○	—
Overhead grab handles for driver and front passenger	●	●	●	●
Overhead grab handles for rear seat passengers	●	●	●	●
A-pillar grab handles for driver and front passenger	●	●	●	●
B-pillar grab handles for rear seat passengers	●	●	●	●
Rail System				
Rear seat rail system, allowing longitudinal adjustment for rear bench and 2 x Captains seats - 4 rails	●	●	—	—
Rear seat rail system, allowing longitudinal adjustment for rear bench, 2 x Captains seats and Multi-function table - 6 rails	○	○	●	●
Steering Wheel				
3 spoke leather steering wheel	●	●	●	●
Audio, telephone, cruise control and Multi-Function Display controls mounted on steering wheel	●	●	●	●
Steering wheel height and tilt adjustment	●	●	●	●
Storage				
Multi-function table mounted on rail system (includes drink holder, magazine pocket and drawer)	○	○	●	●
Cooling/warming box (32L capacity)	○	○	○	○
Front door pockets	●	●	●	●
Glove compartment with lockable lid	●	●	●	●
Dash-mounted cup holder (2) with additional storage	●	●	●	●
Storage compartments on side of front seats	●	●	●	●
Coat hooks throughout passenger area	●	●	●	●
Front sunvisors with ticket holder and illuminated vanity mirror	●	●	●	●
Waste bins in the door pockets	●	●	●	●

● Standard ○ Optional Extra — Not available

*Leather appointed seats have a combination of genuine and artificial leather, but are not wholly leather.

Optional Packages	Comfortline Premium	Comfortline Premium	Highline	Comfortline Exec
Goodnight Package				
Multi-flex board bed extension (replaces retractable luggage compartment cover)				
Fabric blinds for windows				
Reading lamp	○	—	○	—
Washable bed cover				
Three (3) drawers underneath 3-seater bench				

Specifications

Engine	2.0 litre TDI340		2.0 litre TDI450	
Type	4 cylinder inline turbocharged direct injection diesel		4 cylinder inline bi-turbo direct injection diesel	
Max power, kW @ rpm	110 @ 3,500		146 @ 4,000	
Max torque, Nm @ rpm	340 @ 1,750-2,500		450 @ 1,500-2,000	
Cubic capacity, litres/cc	1,968		1,968	
Fuel type (recommended)	Diesel DIN EN 590		Diesel DIN EN 590	
Fuel tank capacity, L	80		80	
Transmission	7 Speed Direct Shift Gearbox (DSG)		7 Speed Direct Shift Gearbox (DSG)	
Driven wheels	Front-wheel drive	4MOTION all-wheel drive	Front-wheel drive	4MOTION all-wheel drive
BlueMotion Start/Stop system [^]	●	●	●	●
AdBlue	●	●	●	●
Fuel Consumption ** - Comfortline Premium				
Combined, L/100km	6.6	7.6		
Fuel Consumption ** - Comfortline Exec / Highline				
Combined, L/100km			7 7.1	7.9

Weights and Capacities

	Comfortline SWB	Comfortline Premium SWB	Comfortline Premium SWB	Comfortline Premium LWB	Comfortline Premium LWB	Comfortline Exec LWB	Highline SWB	Highline SWB
Weights	TDI340 Front-wheel drive	TDI340 Front-wheel drive	TDI340 4MOTION all-wheel drive	TDI340 Front-wheel drive	TDI340 4MOTION all-wheel drive	TDI450 Front-wheel drive	TDI450 Front-wheel drive	TDI450 4MOTION all-wheel drive
Gross Vehicle Weight (GVM), kg	3,000	3,080	3,080	3,080	3,080	3,080	3,080	3,080
Unladen Mass ¹ for Standard roof, kg - DSG	2,247	2,266	2,376	2,307	2,396	2,332	2,294	2,404
Payload ² maximum for Standard roof, kg - DSG	753	814	704	773	684	748	786	676
Towing Capacity, kg[≠]								
Braked	2,500	2,500	2,500	2,500	2,500	2,500	2,500	2,500
Unbraked	750	750	750	750	750	750	750	750
Towbar Load Limit, kg	100	100	100	100	100	100	100	100

Full vehicle specifications are available at www.volkswagen.com.au

[^]The Start/Stop system is designed to reduce fuel consumption and CO2 emissions. It achieves this by automatically switching off the engine while the vehicle is stationary and then starting it again automatically when the driver wants to drive off. There are certain operating conditions where the Start/Stop system is deactivated (e.g. during engine warm-up), please refer to the owner's manual for full operating information.

**Fuel consumption figures according to ADR 81/02 derived from laboratory testing. Factors including but not limited to driving style, road and traffic conditions, environmental influences, vehicle condition and accessories fitted, will in practice in the real world lead to figures which generally differ from those advertised. Advertised figures are meant for comparison amongst vehicles only.

1. The Unladen Mass (UM) includes 10L of fuel, vehicle fluids and no occupants. Figures quoted are for base model vehicles only.

2. Payload figures determined by subtracting 'Unladen Weight' from total 'Gross Vehicle Mass' (GVM). A vehicle's final payload, given the different configurations, can only be determined by weighing the individual vehicle and comparing to the known GVM. Figures quoted are for basemodel vehicles only.

[≠]When fitted with Volkswagen Genuine Tow Bar. Towing capacities are applicable to Volkswagen Genuine Accessory Tow Bar. Towing capacity figures are maximum figures and actual towing capacity depends on factors including the laden mass of the vehicle, driving conditions and fitment of any accessories. Volkswagen Group Australia does not endorse or will not be held liable for any claim, loss or damage arising from the use or fitment of electronic trailer brakes.

● Standard ○ Optional Extra — Not available

Dimensions

	Comfortline Premium	Comfortline Premium	Highline	Comfortline Exec
	Short wheelbase	Long wheelbase	Short wheelbase	Long wheelbase
Seating capacity	7 (2+2+3)	7 (2+2+3)	7 (2+2+3)	7 (2+2+3)
Passenger and luggage compartment area (m ²)	4.3 / 5.0	4.3 / 5.0	4.3	5
Electric sliding door Width x height (mm)	948 x 1,247	948 x 1,247	948 x 1,247	948 x 1,247
Tailgate Width x height (mm)	1,438 x 1,262	1,438 x 1,262	1,438 x 1,262	1,438 x 1,262
Tailgate Width x height (mm)	11,900 / 13,200	11,900 / 13,200	11,900	13,200
Roof load (kg)				
2 roof bars	100	100	100	100
3 roof bars	150	150	150	150



5 years Unlimited Kilometre Warranty

At Volkswagen, we pride ourselves on the highest quality standards that come with German engineering.

We back this commitment with a 5 year unlimited kilometre warranty on all new Volkswagen vehicles¹.



1 year Roadside Assist

Every new Volkswagen comes with a 1 year Roadside Assist membership².

That's 24 hour roadside assistance, emergency accommodation, car rental and towing as well as property and other assistance, all included for added peace of mind.



Volkswagen Care Plans

Volkswagen Care Plans³ have you covered for your first 3 or 5 scheduled services, providing you savings off the total Assured Service Pricing RRP across a wide range of models. It's convenient, hassle-free scheduled servicing easily available for purchase at your local Volkswagen Dealer.



Assured Service Pricing

Assured Service Pricing⁴ gives you the comfort to know the cost of your first 5 scheduled services, when servicing your vehicle at any authorised Volkswagen dealership.

Our Volkswagen dealers have access to the latest diagnostic equipment and tools. Plus, they use Volkswagen Genuine Parts[®] to ensure your Volkswagen stays a Volkswagen.

1. Conditions and exclusions apply, see <https://www.volkswagen.com.au/en/owners-service/warranty.html>. Your rights under this warranty are provided in addition to, and in some cases overlap with, consumer guarantees under the Australian Consumer Law and do not limit or replace them.

2. Volkswagen Assist (Roadside Assistance) Conditions and exclusions apply, see <https://www.volkswagen.com.au/en/owners-service/service-repairs-parts/roadside-assist.html>.

3. Volkswagen Care Plans are available for purchase at <https://www.volkswagen.com.au/en/owners-service/service-repairs-parts/care-plans.html> or from participating authorised Volkswagen Dealers for Eligible Vehicles and covers standard items as contained in each scheduled service interval only. The service intervals occur every 15,000 KM/12 months (whichever occurs first) for all models except MY18 to current Crafter vehicles and MY21 and MY22 Amarok vehicles, which are scheduled to occur every 20,000 km/12 months (whichever occurs first). These Care Plans can only be purchased prior to the first scheduled service and up to 22,500 km/15 months (whichever occurs first) for all models except MY18 to current Crafter vehicles and MY21 and MY22 Amarok vehicles which is 30,000 km/15 months (whichever occurs first). The timeframe takes effect from when the vehicle is first reported in our system as 'sold'. Discount structure varies by model. For details of what is not included in a scheduled service, please refer to the program terms and conditions.

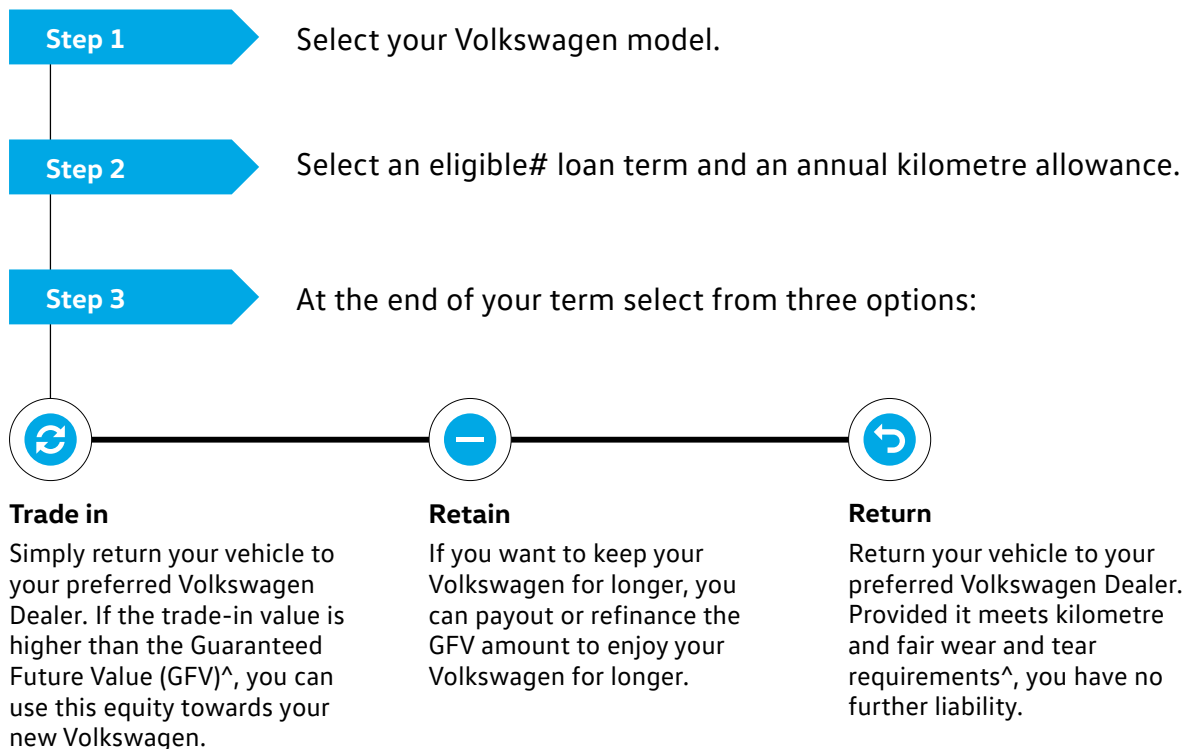
4. Volkswagen Assured Service Pricing is current as at the date the customer obtains a price from the Volkswagen Service Pricing Guide or from a participating authorised Volkswagen dealer and is subject to change without notice. Customers are advised to confirm current pricing on the Volkswagen Service Pricing Guide or with an authorised Volkswagen dealer on the day of each scheduled service. Volkswagen Assured Service Pricing applies to the cost of standard items in each of the first 5 standard scheduled services of your vehicle which are scheduled to occur at every 15,000 km/12 month interval (whichever occurs first) or for MY18 to current Crafter vehicles and MY21 and MY22 Amarok vehicles only, 20,000kms/12 month interval (whichever occurs first). Exclusions and conditions apply. For more details on the eligible models, pricing, items not included and for full terms and conditions, please see <https://www.volkswagen.com.au/app/locals/service-pricing-guide>. Volkswagen Australia reserves the right to at any time modify or discontinue the Volkswagen Assured Service Pricing program.

Volkswagen Choice[^]

Guarantee the minimum future value of your Volkswagen

Naturally we understand that your Volkswagen represents a valuable investment, so we understand that you want to maintain it in premium condition. Volkswagen Choice[^] is a finance program tailored to the requirements of Volkswagen owners by providing assurance around your Volkswagen's future value[^], whilst offering simple monthly instalment financing options.

Whether you are selecting your new Volkswagen for business or personal use, you can choose the contract term that best suits your requirements. Enjoy the confidence that comes from having locked in a minimum value up front to be attributed to your vehicle at the end of your contract[^]. There are also no account keeping fees with a fixed interest rate.



[^]Volkswagen Choice has a Guaranteed Future Value (GFV) which is the minimum value of your vehicle at the end of your finance contract as determined by VFS. If you decide to return your car to VFS at the end of your term, VFS will pay you the agreed GFV, which will be put against your final payment subject to fair wear and tear conditions and agreed kilometres being met. At the end of your term, you can elect to (1) trade-in; (2) return; or (3) retain the vehicle by paying the GFV owed to VFS at the end of the loan term after all repayments have been made. You will be liable for any loan contract deficit and additional charges apply if you exceed the nominated kilometre allowance and/or the vehicle is not in an acceptable condition. Fleet, government, rental buyers, hire car and chauffeur companies excluded. To see if this product is right for you, please see our Target Market Determination on our website.

The Multivan 6.1

Volkswagen Group Australia Pty Ltd
895 South Dowling St Zetland NSW 2017
ABN 14 093 117 876

Printed in Australia
December 2022
www.volkswagen.com.au

Publication: VWCMUL6.1MY24

Your Volkswagen Dealer.

Important information

Apple CarPlay® is a registered trade mark of Apple Inc. Android Auto™ is a registered trade mark of Google Inc. MirrorLink® is a registered trade mark of Car Connectivity Consortium LLC. Bluetooth® is a registered trade mark of Bluetooth SIG Inc.

Volkswagen is distributed by Volkswagen Group Australia Pty Ltd (ABN 14 093 117 876) of 895 South Dowling St Zetland NSW 2017. Specifications are as planned at July 2022, for Model Year MY24 and are subject to change without notice or obligation. All information in this brochure are correct at the time of publication, however variations may occur from time to time and Volkswagen, in so far as it is permitted by law to do so, shall not be liable in any way as a result of any reliance by any person on anything contained in this brochure. Authorised Volkswagen Dealers will provide up-to-date information on model application, design feature, prices, and availability on request.